



HIFI.COM.SG

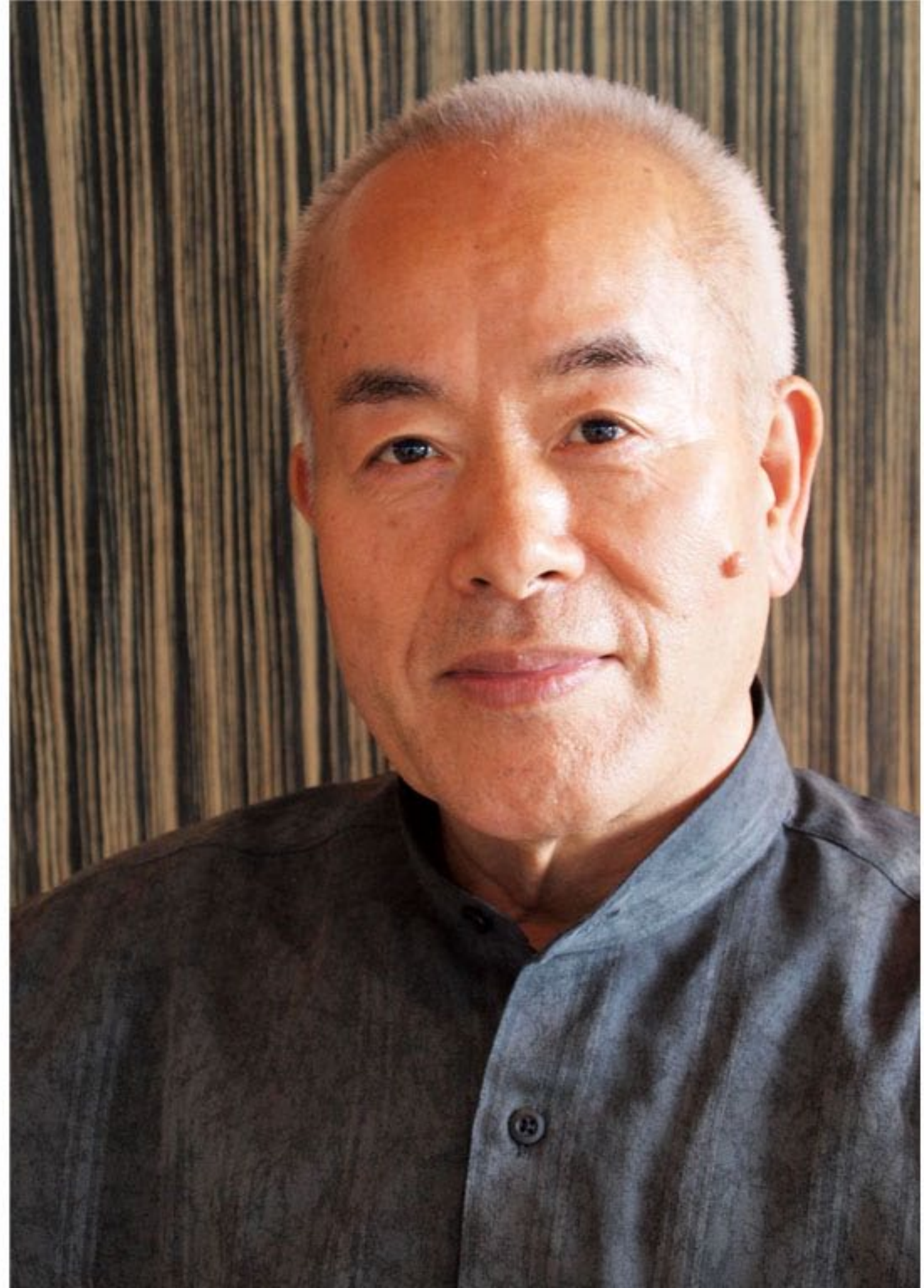
FEBRUARY 2012: HARMONIX EDITION

The key to achieving a musical and enjoyable sound system is to tune the system and room to achieve a state of balance – nothing added, nothing subtracted. Assembling the best audio components into a system does not guarantee the best results. In fact a simpler, less costly system that have been carefully set up and tuned can outperform costlier equipment.

Harmonix provides the key to achieving the best performance from any audio component. Harmonix is the brainchild of Japanese audiophile Kazuo Kiuchi. Kiuchi-san hails from a family of music instruments builder. From a young age, Kiuchi-san developed an interest in the acoustic properties of materials that are used to make musical instruments.

Using the same theory as applied in the making of musical instruments, Kiuchi-san developed tuning accessories that when used with almost any audio component, will elicit a level of performance not easily achievable even at great costs.

Kazuo Kiuchi
Father of Harmonix



To understand how beautiful sound is produced in the first place, resonance tests were conducted on Stradivarius, Guarneri and Amati violins. Kiuchi-san discovered that when resonance is harmonized in one frequency, every aspect of the sound is precisely conveyed as it emanates from the instrument. They also found that resonance in a violin is perfectly balanced in one frequency, which is why there is no distortion.

Harmonix applied this new knowledge to develop entirely a new way of tuning audio, visual equipments including listening rooms that treats resonance as an essential element of sound. When Harmonix is applied, you can eliminate unwanted resonance frequencies to achieve incredibly pure and natural, distortion-free reproduction for a new level of sonic realism.

A sweet, bright sound with crisp transients, a clearly delineated sound stage, rich harmony, deeper dynamics, better contrast for sound and colours in fact, everything that constitutes beautiful sound and colours as lifelike. Now there is an easy way to eliminate problems you have ever encountered with your systems.

The Science of Beautiful Sound

Harmonix



THE HARMONIX TUNING PROCESS

Harmonix suggests a four stage tuning process –



1) Use tuning feet under key components



2) Use tuning cables throughout the system



3) Tune the room



4) Use tuning bases and Enacom

THE HARMONIX TUNING PROCESS



1) Use tuning feet under key components

All audio components are subjected to varying degrees of vibration. Some components exhibited shrill, congested or even harsh sound when excessive vibration can affect its operation. In this respect, CD players, CD transports and DA converters are most susceptible. Tube preamplifiers and power amplifiers can be substantially improved in performance when they operate without any form of vibration interference. For solid-state components, you will be surprised the dynamics and resolution can be substantially improved when Harmonix tuning feet are used. For any component to perform optimally, the vibration must be eliminated or at least minimised.

Harmonix offers a range of tuning feet to match the performance level of your components. Harmonix tuning feet will clean up the entire bandwidth, allowing the system to exhibit superior dynamic range, lower noise floor, improve resolution, enhance the soundstage, improve the tactility and musicality.

Harmonix Tuning feet

Using the natural properties of wood, Kiuchi-san spent countless hours auditioning and design-ing his tuning feet. Using a combination of layered hardwood encased within a metal 'shell', Kiuchi-san is able to 'tune' the resonance characteristics of the tuning feet. When placed under a component, directly contacting the chassis, it effectively grounds all the vibration away. The design of the feet, the materials used and the redistribution of mechanical vibration will have an effect on the mechanical integrity of the component. This will subtly but surely have an effect on the sound reproduction of the component.

Users have commented the positive attributes their system acquired after using the Harmonix tuning feet – dynamic range improved significantly with a lower noise floor – you can pick out the low level signals better than before. The soundstage sounds bigger and more articulate. The transient attack is snappier with better control. The bass end goes deeper with more presence.

Harmonix offers a selection of tuning feet, tuning spike with matching spike bases.



TU-666M

The flagship Harmonix TU-666M tuning foot commemorates the 20th Anniversary of Harmonix. The 666M is a limited production footer offering a wide and dynamic soundstage, harmonically rich and exquisite sounding. Housed within a 50mm steel ring is a specially selected hardwood. Adjustable feet enable the feet to adapt for a stable fit. The TU-666M is till date, Kiuchi-san's finest expression of his tuning base technology.

Review of the TU-666M

TU-606Z

Similar to the TU-666ZX, the TU-606Z is the same diameter but less height. Performance second only to the TU-666ZX. Adjustable base. 50mm diameter 28mm high.

Applications – For all High End components – CD transports, DACs, preamps, power amplifiers, etc.

TU-600

The smallest version with adjustable base. Performance second to the TU-666ZX and TU-606Z. Adjustable base 44mm diameter 18mm high.

Applications – For all High performance components – CD transports, DACs, preamps, power amplifiers, etc.





TU-303 EX

Slim design for rack mounted components.
Non-height adjustable.
95mm diameter 19mm high.



SYN-100 'Synergy Point'

To use with spike base, the SYN-100 tiptoe spike can be used under speaker systems as well as place below electronics, with the metal point resting on a spike base. The spike is made from a hybrid metal/wood layered material. Finished in dark wood and gold tip or all black finish, the SYN-100 tiptoe feet is an indispensable item for fine-tuning your system. 42mm diameter and 27mm height.

TU-201 mk2

Large tuning feet for heavier components.
Non-height adjustable.
125mm x 125mm x 42mm high.

Applications - For all High End components -
large integrated amplifier, power amplifiers, etc.





2) Use Harmonix tuning cables throughout the system

For a clearer, sweeter, richer and more dynamic sound quality from your systems...

Audio cables must be able to deliver the extended frequency range and pure sound potential of digital audio systems. With conventional cables, you may probably be only hearing a fraction of the potential of the sound system. The Harmonic-Strings series of interconnect and speaker cables are based on decades of research into high-fidelity transmission cables. After years of researching cable conductor materials, Harmonix discovered that each type of conductor has a specific electronic resonance signature, and resonates in a specific pattern. Harmonix found a way to compensate for this resonance so that it improves, rather than interferes with, signal quality.

Using Harmonix cables in your system and suddenly, all "fuzziness" disappears, you hear a wider field of sound than you thought even existed in your system. Harmonix cables are faithful to the original recording, adding a previously-unheard roundness to the sound color, and a breathtaking depth and concentration. Sound is simply clearer, sweeter, richer and much more dynamic.

With the advance of high sampling and high bit processing rates, the frequency range and capability of audio systems will continue to improve. And no matter how good it gets, your Harmonix cables will carry the entire signal faithfully, without degradation or interference.

...and not forgetting Harmonix makes some of the world's best power cords.

Your audio system's power cords are like the arteries in your body. If your arteries are blocked, your whole physical system is affected. Similarly, when there is electromagnetic and RF interference in the cords, the sound quality of your whole audio system deteriorates. For years, Harmonix engineers have been studying cord insulation materials and construction methods, discovering the definitive rules that govern efficient conductivity and smooth electron flow in cables.

Harmonix power cords give your system a breathtakingly clear sound, more dynamic and lifelike than possible with any other cables. High-pitched sharpness decreases, notes become clearer and more delineated, sonic response increases and has more organic elegance. World famous recording engineers at JVC use them at their XRCD mastering studio, where the finest reference quality CD digital mastering is done.

HS-101GP interconnect cable

Dubbed 'Golden Performance', the HS-101GP is Harmonix highest performing interconnect cable. The cable starts with high purity PCOCC copper conductors terminated with a special grade non-ferrous Harmonix RCA connector using a triple plating of special copper, gold and Rhodium. The connector also comes with locking collet to ensure good contact and grounding. A dedicated ground and shield keep noise to a minimum.

Comments from reviewers put the HS-101GP as superior to many well regarded and expensive interconnects. Suitable for the highest performance level systems.

[Click here for online reviews \(digital edition only\)](#)

Review in High Fidelity, Poland

Review in HiFi Choice, UK

The HS-101GP is available terminated with XLR as the HS-101GP-SUS.



CS-120 Improved speaker cable

The most affordable speaker cable from the Harmonix range, the new improved version improves upon its already impressive predecessor! The latest version incorporates many design elements from the classic Harmonic-Strings cables, delivering extended dynamics, rich with details, smooth and refined with a transparent soundstage.



HS101-EXQ 'Exquisite' high definition speaker cable

Harmonix finest speaker cable, 'Exquisite' precisely describes its sound. The cable uses multiple layers of shielding to reject 99% of electromagnetic waves and enhancing an additional 7.8 dB of signal to noise ratio.

High purity PCOCC conductors with gold/rhodium-plated terminals provide a speaker cable capable of astonishing clarity, rich in details, wide soundstage and separation of sound.

Review in High Fidelity (Poland)



***X-DC Studio Master
'Million Maestro'
AC power cord***

***'...a sound that is breathtakingly
larger, richer in detail, and more
dynamic, natural and lifelike...'***

Harmonix's crowning achievement in power cord design, the X-DC Studio Master uses the purest grade of copper - PCOCC to create a masterpiece in power cord engineering. The X-DC Studio Master 'Million Maestro' power cord adds no noise, no distortion and no colouration allowing the component to deliver its best performance possible. Available in 1.5m and 2m with WattGate power plugs.

X-DC350M2R AC power cord

Harmonix describes the X-DC350M2R as 'exquisite and fabulous'.

The X-DC350M2R employs a new OFC compound together with its Harmonix Resonance Control Technology in their power cords to great effect. It enables your system to deliver superior dynamics, more details, better tonal balance and a wider sound.

X-DC Studio Master 350 AC power cord

Second only to the X-DC350M2R, the X-DC Studio Master 350 uses a new OFC compound is a reference standard power cable suitable for all components. Terminated with high quality Watt-Gate power plugs.





“Attach Harmonix room tuning devices to major surfaces of a sound room and the change is immediate. Instantly, the room offers a wider dynamic range with deeper silences between musical notes. The structure of individual notes become cleaner, clearer and better defined with each note having a discernable end as well as a beginning. Offering a complex system of energy storage and soundfield dynamics, Harmonix room tuning devices lift away audible distortion almost as if by magic.”

3) Tune the room

Taming the room acoustic had never been an easy task. From large concert halls to small recording studios, many forms of acoustic treatment have been used to control the energy generated by sound waves. Many of these room treatment devices employ foam or acoustic wadding to absorb sound. They tend to be very large in size and unsightly.

Unless you have a dedicated listening room, these forms of room treatment are not practical for the normal living room, not to mention the effect may not be effective. Harmonix developed the astounding RFA-7800 Room Tuning Device - instead of large pieces of foam or padding, the unique RFA-7800 comprises of small and discrete tuning ‘buttons’ of 25mm in diameter and just 4mm thick. Finished in white in sets of 18 pieces. Harmonix provide placement suggestions, which depend on the size of the room, the degree of acoustic damping and sound improvement desired multiple sets of Room Tuning Device can be used. In use, they are hardly noticeable, visually that is.

A smaller ‘Mini Disk’ the RFA-80i offers the budget conscious a cheaper alternative. Smaller in size – 10mm diameter and 2mm thick, the Mini disk provides a cost effective room tuning device second only to the RFA-7800.





4) Tuning bases and Enacom

Audio equipment manufacturers are starting to recognise the effect mechanical grounding does on sensitive audio circuits. While a hard spike footer is able to channel vibration to the surface the component is standing on, there lies the possibility the platform the spike sits on is able to absorb and distribute the energy. Some platforms actually reflect some of the energy back through the spike to the component!

The solution is to apply spike base for the spike to sit on. It adds stability, grounds the energy using its inherent damping of the spike base and prevents the energy returning up the spike and back to the component.

Harmonix makes a range of Spike bases with varying degrees of tuning efficiency to enhance the performance of your equipment. You can use them below the spikes of your speakers and below the spike of your equipment if they are so equipped.





RF-909X mk2 'Base-X'

A simpler two-layer design, the RF-909X mk2 is second only to the RF-999MT mk2! The RF-909X mk2 is also smaller than the RF-999MT mk2 (55mm vs 77mm diameter) making it easier for use on an equipment rack. Used as such, it will improve the entire frequency spectrum with deeper bass extension and sweet extended highs. Black or gold metal top with black wood base.

RF-999MT mk2 Tuning Base

Using a 'hybrid layer of wood and metal', Harmonix created the ultimate spike base – the RF-999MT mk2. Listeners have described the effect as 'extended and smooth highs, extended bass and rich and open sounding midrange.'



Line Enacom



A.C. Enacom



A.C. Enacom (Wattgate)



Speaker Enacom

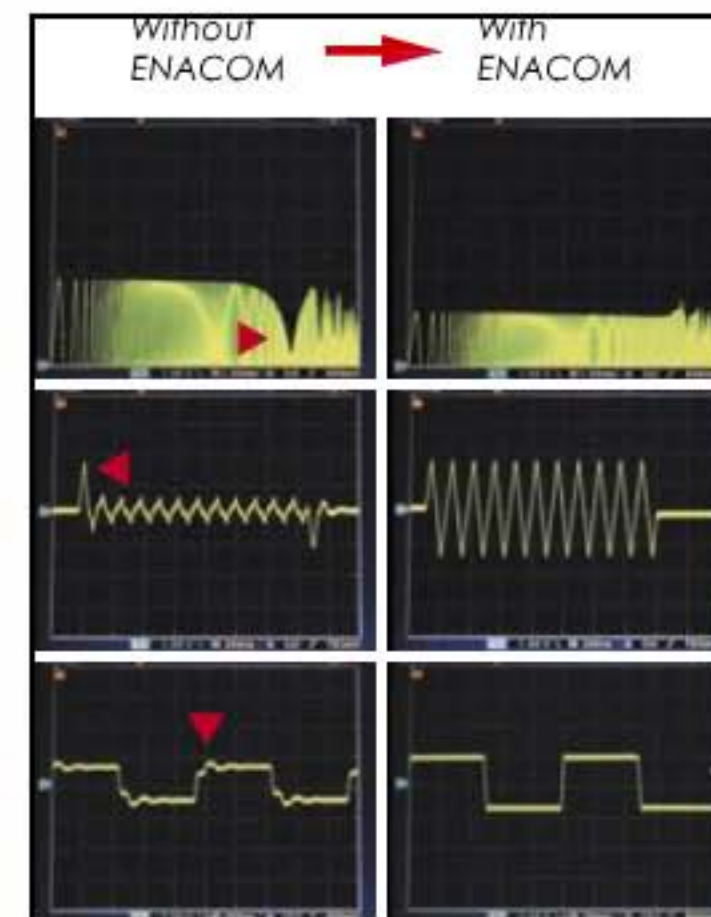
Enacom - The Noise Eliminator

As the signal transverse through a cable - it encounters load resistance - the solder connection between the cable and the connector for instance and it gives rise to a ringing distortion giving a harsh and unpleasant sound.

Enacom is designed to eliminate this ringing distortion. Enacom noise eliminators are easy to use and inexpensive way to filter out RF noise. Enacom makes a complete range for power, interconnects and speaker cables.

How effective is Enacom?

See the diagram below





Masterpiece Analogue Record Clamp TU-812

Million Maestro series is Harmonix highest end products and the TU-812 is the best record stabilizer and resonance control device.

Made from selected wood and metal compound, the TU-812 harmonises the record playback to its maximum potential!



TU-812 Mk 2 Record Stabilizer Clamp
TU-800EX Tuning Mat

Developed to work together – the TU812MK2 and TU-800Exi clamp and mat move vinyl resonance out of the audio band. This results in ‘astonishing-musical clarity is greatly increased, and the separation of musical instruments releases unprecedented depth of sound. An infinitely improved sense of reality and palpability make for the kind of sound experienced only during a live musical performance.’



Reimyo

*Reimyo is Kazuo Kiuchi's realisation of a perfect sound system
- one that conveys all musical nuances...
and all the musical emotions...*

CDT-777 CD transport

On the development of the CD, the playback mechanism spins the disc, a laser picks up the 1s and the 0s (the pits) and feed the datastream to a digital to analogue converter. Music – pure, perfect sound forever.

Simple as it may seem, it is actually skimming the surface, the superficial. The last thirty years we spent with the CD, have taught us a lot about the multitudes of effects that can impede the digital signal even before it reaches the Digital converter. The stability of the power supplies, mechanical stability of the structure, the mechanical stability of the transport mechanism, the digital data buffer stage, etc.. All have a profound effect in the process of extracting the bytes from the silver disc.

The Reimyo CDT-777 transport is built to the highest standards for the best possible digital data extraction from the Red Book standard CD. Recognising the compromises of ‘universal’ transport mechanisms, the CDT-777 uses the well regarded ‘top of the line’ Philips mechanism. A magnetic stabilizer ensures the CD is properly secured to its spindle. The Philips mechanism provides a pure 16-bit output, at a clock accurate sampling rate of 44.1 kHz. The mechanism is housed in a suspension within the aluminium chassis. To further stabilize the whole player, the CDT-777 comes fitted with outrigger feet, spiked with spike bases for rock solid stability. A smooth sliding cover protects the mechanism. The whole player weighs a massive 14 Kg.

The CDT-777 resolves a high-resolution digital signal stream with no noise or distortion to your DAC.

Review in Positive Feedback magazine

Review in Ultra High Fidelity Magazine

Stereo Times ‘Most Wanted’ components 2010



DAP-999EX digital to analogue converter

The digital to analogue converter provides the final link in the digital chain. Matched with a high-resolution CD transport, like the CDT-777, the DAP-999EX resolves layers of music that you can never achieve with a lesser digital playback system!

In the heart of the DAP-999EX is a unique 24 Bit CC Converter with 8x over sampling. It is designed for the highest quality conversion for a 16-bit stream signal with sampling frequencies of 48 kHz, 44.1 kHz and 32 kHz. The DAC employed enable the DAP-999EX an unprecedented 114 dB signal to noise ratio using proprietary Reimyo/JVC K2 processing technology. In addition, like all Reimyo electronics, you have the benefit of resonance tuning using Harmonix technologies.

The DAP-999EX provides professional AES/EBU input as well as BNC, Coaxial as well as Toslink. Both balanced and unbalanced output are offered.

Review by 6 Moons



CAT-777 MK II vacuum tube preamp

Superb musicality with tactile presence, tube amplification has been the choice for discerning audiophiles. The Reimyo CAT777 MK II preamplifier makes beautiful music – rich and full bodied, with a wide dynamic range, it brings the music to life in your room.

The CAT-777 MKII uses no negative feedback. This is a full tube preamplifier with a tube buffer and tube rectification. A specially selected wire, chosen for its sonic qualities, is used for its internal wiring. High quality InfiniCap custom made film capacitors and audio grade resistors are employed. The preamplifier is symmetrically laid out to preserve the left/right channels so that it will have an identical soundfield.

In use, the CAT-777 MKII has been lauded as supremely quiet with surprising agility and dynamic. Partnered with a good power amplifier, the CAT-777 MKII is no longer a hifi component but an expressive and emotional music reproduction instrument of the highest order.

Review by Winston Ma





KAP-777 power amplifier

The last piece of the Reimyo audio chain is also the latest component to emerge from Kiuchi-san's portfolio. The amplifier is unique – it has just one transistor (yes it is a solid state amplifier) per channel. Just one Mosfet delivers an impressive 200 watts rms per channel at 8 ohms which doubles to a whopping 400 watts rms at 4 ohms. It is stable down to 1.5 ohms, the full dual mono KAP-777 has an ultra wide bandwidth of up to 100 kHz.

There are many noteworthy aspect of its construction. The RCA sockets are machined from pure PCOCC copper as are the speaker binding posts. There are large RIFA capacitors and within the amplifier there is the Harmonix treatment – AC Enacom power filter can be found at the IEC socket.

Review by 6 Moons

ALS-777 AC line power conditioner

The power line has a great effect on electronic components, Reimyo created the ALS-777 AC line stabilizer allows your electronic components to sound smoother and more refined. Unlike typical 'line filter', the ALS-777 does not act as a filter or transformer - it is a combination of Harmonix Resonance Conditioning together with Quantum Corp's QRT electromagnetic field technology to enhance AC current transfer. It runs parallel to the AC line with high quality high conductivity, low noise internal wiring. This results in an AC conditioner without the drawbacks of typical power conditioning products.



Review in [EnjoyTheMusic](#)

Review in [Soundstage](#)

A HARMONIX RELATIONSHIP





There may be systems with an ‘impressive’ sound or perhaps with one with exceptional performance in its architectural presentation, eventually once the initial euphoria is over, the system stills sound more hifi than music. Then there are systems that never begs for attention, no fire-works, just quietly doing its job – reproducing music. Music lovers who owns one or more Reimyo components sought after a certain musicality and connection with the music reproduced through the system.

Reimyo is the electronics line of Kazuo Kiuchi, the creator of Harmonix and Enacoms. Kiuchi-san never sought to reinvent the wheel. Instead, the Reimyo line is about the perfection of balance – through the use of Harmonix tuning devices. Of course you can buy Harmonix tuning feet and dots and apply judiciously within the innards of any CD player, amplifiers and even speakers. The trial and error approach means countless possible permutations. You can never be certain if you get it absolutely right.

Reimyo components are tuned to perfection personally by Kiuchi-san himself. Only when the component reaches a certain state of tune then it is built and sold. In other words, when you buy a Reimyo component, you have employed Kiuchi-san’s acute sense of hearing developed over thirty years with harmonix tuning devices, to fine tune the component to the state of perfection. Surely that aspect alone is worthy of the premium asked for with Reimyo components?

Mr Ng’s system had been featured in the past but since my last visit in November last year, the system have undergone some changes. The Nottingham turntable and EAR phono stage is no more and in place, he bought a second 300B PAT-777 power amplifier. The PAT-777 has just been discontinued and it is possible, this could be one of the last units made. Collector’s item? You bet!



Three tiers of isolation - SYN-100 Syn Points sharp points rest on RF-999MT mk 2 tuning bases, which in turn rests on TU-201 mk 2 tuning bases.



The beautiful Harmonix Royal Stage rack system



With two power amplifiers, each driving one of the Gemme Audio Katana loud-speaker – tweeter and mid-bass, the amplifier will have better control over the excursion of the drive unit, enhancing clarity and separation with a more natural and effortless sound quality. Part of the contribution comes from the Harmonix tuning feet and tuning base. The CAT-777 mk 2 preamp remains unchanged.

The system was previously on a solid walnut rack, since then it is replaced by the Harmonix 'Royal Stage' rack in black and black chrome finish. Again the rack and shelves have been tuned with Harmonix tuning devices. The room have also been treated with Harmonix room tuning discs, which looks like a large button from a jacket. Harmonix have a guide as to the placement of the tuning discs. In this room, three boxes of 18 pieces each were used to treat the room. Incidentally, the room tuning discs is done by Kiuchi-san himself!



The now discontinued CDP-777 CD player. Bettered only by the new CDT-777 transport and DAP-999EX DAC



MK-II

POWER



Relamp

VACUUM TUBE CONTROL AMPLIFIER
CAT-777



PHONO



CD



TUNER



LINE

MAIN VOLUME



Harmonix



The Harmonix Room Tuning Devices - discrete yet more effective than the use of acoustic foams or sound traps.



HARMONIX, ENACOM AND REIMYO

IS DISTRIBUTED BY

AUDIO NOTE SINGAPORE PTE LTD

NO 1 COLEMAN STREET THE ADELPHI #03-35 SINGAPORE 179803

T: (65) 6334-7639 E: INFO@HIFI.COM.SG